

50

CalderaSpas®
EST. 1976



INTRODUCING THE NEW

Fantasy® Series

BY CALDERA® SPAS



Designed With Plug-N-Play Technology. Built for Lasting Value and Everyday Wellness.

Just fill it up, plug it in, and start enjoying soothing hydrotherapy with minimal fuss and maintenance. Whether you want a cozy spa for two, or one that fits up to five, the Fantasy Series offers five versatile models to complement your space and lifestyle.



PLUG-N-PLAY

No special wiring. No added plumbing. Just fill your spa, plug it into a standard 115V outlet, and enjoy the first of many comfortable soaks. It's spa ownership made refreshingly simple.



AFFORDABLE WELLNESS

Crafted using a rotational molding process, each Fantasy model features a durable, unibody shell that's stylish, budget-friendly, and designed for years of enjoyment.



EASY WATER CARE

Fantasy Series spas come ready for the FROG® sanitizing system. Prefilled cartridges automatically release sanitizer and minerals to keep water soft, clean, and clear with less effort. It self regulates based on the water's sanitization needs, maintaining a consistent level of protection. Available in the U.S. only; bromine is available in Canada.



PORTABLE

Lightweight yet strong, Fantasy Series spas are easy to move when empty, making them ideal for patios, small yards, balconies, or second homes. Whether you're reimagining your space or relocating across town, your spa can move with you.



ENERGY EFFICIENT

With full-foam insulation, an internal heater, and a locking thermal cover, your spa maintains consistent warmth while operating efficiently. Every model meets the strict energy standards of the California Energy Commission (CEC), so you can relax knowing your spa is keeping energy costs in check.



MAKE SPACE FOR WHAT MATTERS MOST

Whether it's a quiet morning soak, a moment of stillness under the stars, or a chance to reconnect with loved ones, your Fantasy spa makes it easier to carve out space for the things that bring you joy, all with the peace of mind that comes from owning a Caldera® Spa.

Invite™



4 SEATS | 25 JETS
5'7" X 6'7" X 33"

Bloom™



5 SEATS | 40 JETS
6'6" X 6'6" X 34"

Entice®



4 SEATS | 33 JETS
6'6" X 6'6" X 34"

Aspire®

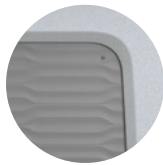


2 SEATS | 11 JETS
6' X 4'5" X 29"

Splendor®



5 SEATS | 21 JETS
6'6" RADIUS X 33"



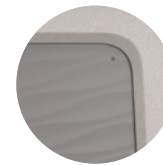
Fog Stone
in Honeycomb



Fog Stone
in Waves



Natural Taupe
in Honeycomb



Natural Taupe
in Waves

Hot Tubbing is as Easy as 1-2-3!

1. FILL IT UP 2. PLUG IT IN 3. ENJOY!

	BLOOM™	ENTICE®	INVITE™	SPLENDOR®	ASPIRE®
Seat Capacity	5	4	4	5	2
Dimensions*	6'6" x 6'6" x 34" 198 x 198 x 86 cm	6'6" x 6'6" x 34" 198 x 198 x 86 cm	5'7" x 6'7" x 33" 170 x 201 x 84 cm	6'6" Diameter x 33" 198 Diameter x 84 cm	6' x 4'5" x 29" 183 x 135 x 74 cm
Jet Count	40	33	25	21	11
Water Capacity	265 g / 1025 L	250 g / 950 L	235 g / 900 L	265 g / 1025 L	125 g / 475 L
Dry Weight	425 lb / 195 kg	390 lb / 175 kg	360 lb / 165 kg	360 lb / 165 kg	260 lb / 120 kg
Filled Weight	3515 lb / 1620 kg	3175 lbs / 1445 kg	3020 lb / 1385 kg	3450 lb / 1590 kg	1655 lb / 755 kg
Color	Fog Stone, Natural Taupe	Fog Stone, Natural Taupe	Fog Stone, Natural Taupe	Fog Stone, Natural Taupe	Fog Stone, Natural Taupe
Cabinet Pattern	Honeycomb, Waves	Honeycomb, Waves	Honeycomb, Waves	Espresso, Coastal Gray	Honeycomb, Waves
Step Type	Straight Roto, Brown or Gray	Straight Roto, Brown or Gray	Straight Roto, Brown or Gray	Curved Roto, Brown or Gray	Straight Roto, Brown or Gray
WeatherPro™ Cover	Gray, Cocoa; 2.5" to 4.0" tapered, 1lb. density foam core	Gray, Cocoa; 2.5" to 4.0" tapered, 1lb. density foam core	Gray, Cocoa; 2.5" to 4.0" tapered, 1lb. density foam core	Gray, Cocoa; 2.5" to 4.0" tapered, 1lb. density foam core	Gray, Cocoa; 2.5" to 4.0" tapered, 1lb. density foam core
Cover Lifters	Low Mount, Cover Rx	Low Mount, Cover Rx	Cover Rx	Low Mount, Cover Rx	Cover Rx
Lighting	Footwell Multi-color light, 2 External Lights	Footwell Multi-color light, 2 External Lights	Footwell Multi-color light, 2 External Lights	Footwell Multi-color light	Footwell Multi-color light
Jet Pump	2-Speed 1.5HP	2-Speed 1.5HP	2-Speed 1.5HP	2-Speed 1.5HP	2-Speed 1.5HP
Jets	8 Ultra Mini Jets 26 Mini Jets 6 Twin Pulse Jets	8 Ultra Mini Jets 21 Mini Jets 4 Twin Pulse Jets	8 Ultra Mini Jets 13 Mini Jets 4 Twin Pulse Jets	18 Mini Jets 2 Twin Pulse Jets 1 Turbo Jet	6 Mini Jets 5 Twin Pulse Jets
Controls	LCD Screen	LCD Screen	LCD Screen	LCD Screen	LCD Screen
Heater	1kw/115v; 4kw/230v	1kw/115v; 4kw/230v	1kw/115v; 4kw/230v	1kw/115v; 4kw/230v	1kw/115v; 4kw/230v
Filtration	50 sq ft Filter	50 sq ft Filter	50 sq ft Filter	50 sq ft Filter	25 sq ft Filter
Water Care System	FROG® cartridge ready** Ozone Optional	FROG® cartridge ready** Ozone Optional	FROG® cartridge ready** Ozone Optional	FROG® cartridge ready** Ozone Standard	FROG® cartridge ready** Ozone Optional
Electrical Requirements	115v Plug-N-Play includes GFCI power cord / 230v convertible***	115v Plug-N-Play includes GFCI power cord / 230v convertible***	115v Plug-N-Play includes GFCI power cord / 230v convertible***	115v Plug-N-Play includes GFCI power cord / 230v convertible***	115v Plug-N-Play includes GFCI power cord / 230v convertible***
Water Features	Waterfall	Waterfall	Waterfall	Whirlpool Jet	N/A
Warranty	5-Year Structure; 5-Year Shell/Surface; 2-Year Textured Cabinet; 1-Year No-Leak Plumbing; 1-Year Component & Labor				

*Subject to change

**FROG®@ease® products are only available in the U.S. For Canada, FROG® Serene® Bromine is available.

***Sub-panel not included

2026 Watkins Wellness®, 1280 Park Center Drive, Vista, California 92081. All rights reserved. All trademarks are the property of Watkins Wellness Corporation. Specifications, features, and colors are subject to change without notice. Not all features are available on all products. FROG® is a registered trademark of King Technology.

